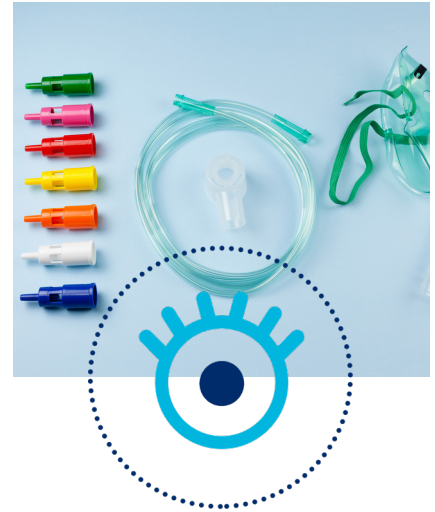




Global Model Number (GMN)



The Global Model Number is a GS1 key used to identify a product model or product family.

The Global Model Number enables companies to uniquely identify the product model through the entire life cycle of the product: design - production - procurement - use - maintenance - disposal.

Certain types of products require communication with trading partners and other stakeholders such as regulators before the product is actually taken into production. Furthermore, different products may be brought to the market based on the same technical product specification. That is why it can be of interest to group them under a same model or family, using a GMN.

Examples include products that are sold under different versions, with different colors or supporting languages, but otherwise technically are the same.

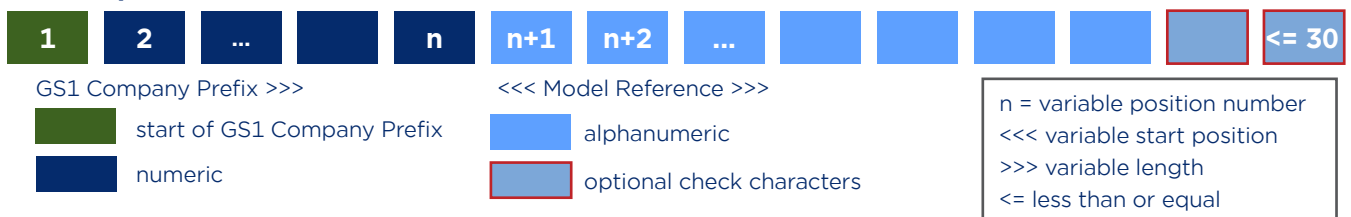
Other examples include medical devices, for which conformity assessment can take considerable time and effort before a product can be released on a market.

In the European Union (EU), the GMN supports the implementation of the requirements of the **Basic UDI-DI** under the **EU Unique Device Identification (UDI) regulations** [on medical devices](#) and [on in vitro diagnostic medical devices](#). The Basic UDI-DI is the main key for medical devices records in the UDI regulatory database EUDAMED and is referenced in relevant certificates and in EU declarations of conformity.

Please note that the **Basic UDI-DI (GMN) has a maximum length of 25 characters, including two mandatory check characters**. These can be calculated thanks to the [GS1 check character calculator dedicated webpage](#).

NOTE: **The GMN will initially be used for identification of regulated medical devices in the European Union.** Other applications may be added in the future, after approval through the GS1 Standards Management Process (GSMP).

GMN (Optional Check Characters)



Basic UDI-DI (GMN) (Mandatory Check Characters)

